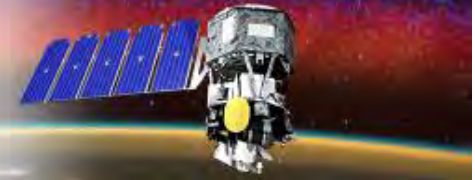


ICON
INTEGRATED
MASTER
SCHEDULE
REVIEW
October 2014

Table of Contents

- Steelray Analysis of Schedule
- Schedule Metrics DCMA 14pt Analysis
- Critical Path Description
 - Might Delivery
 - EUV Delivery
 - IVM EGSE Delivery
 - FUV FM Unit Delivery
- Payload Summary Schedules



Steelray Analysis

Project Analyzer Scorecard 11/30/2014 10:36 PM

ICON Raolan Baseline Status as of 31 Oct 14 v2

Category	Count	Percentage	Value	Grade
Actual Launch Dates	0 tasks	Compliant		Off
Actual Start / Finish Dates in the Future	0 tasks	Compliant		Off
Baseline Vertical Schedule Inception Error	0 tasks	Compliant		Off
CPI Too High	146 tasks	0.00	0.0	Off
CPI Too Low	1465 tasks	0.00	0.0	Off
Delinquent Tasks	124 tasks	Not Compliant		Off
Effort Tasks	14640 tasks	61.2%	0.0	Off
Incomplete External Tasks	170 tasks	No Grade		Off
Incomplete Tasks	12685 tasks	No Grade		Off
Milestone Tasks	15 tasks	76.7%	0.0	Off
Missing Predecessors	11 tasks	0.4%	0.0	Off
Missing Successors	14 tasks	0.4%	0.0	Off
Out of Sequence Tasks	0 tasks	Compliant		Off
Predecessors Complete, Task Not Started	12 tasks	0.5%	0.0	Off
Project Has Status Date	0 tasks	Compliant		Off
Should Start Tasks	1490 tasks	No Grade		Off
SPI Too High	0 tasks	0.00	0.0	Off
SPI Too Low	0 tasks	0.00	0.0	Off
Summary Tasks With Resources	0 tasks	Compliant		Off
Summary Tasks	486 tasks	77.7%	0.0	Off
Summary Tasks With Predecessors	0 tasks	Compliant		Off
Summary Tasks With Successors	0 tasks	Compliant		Off
Task With Duration > 5d	811 tasks	28.1%	0.0	Off
Task With Duration > 10d	115 tasks	9.9%	0.0	Off
Task With Constrained Dates	257 tasks	7.0%	0.0	Off
Tasks With Missing WBS	0 tasks	0.0%	0.0	Off
Task with Total Slack < -20d	0 tasks	Compliant		Off
Tasks with Total Slack < 20d	0 tasks	0.0%	0.0	Off

☐ Schedule Metrics DCMA 14pt Review

DCMA Schedule Analyzer for Project™

ICON Replan Baseline Status as of 31Oct14v3_2007.mpp

Status Date: 10/31/2014

[Completion Task](#): 11 - Integrated Baseline Review (IBR) (12/17/14)

Metric	Count	Percent		General Counts	
1 Logic	10	0.37 %	✓	DCMA Total Tasks	4472
2 Leads	28	0.61 %	✗	Completed Tasks	1743
3 Lags	150	3.25 %	✓	Incomplete Tasks	2729
4 Relations...	198	4.29 %	✓	Baseline Count	1792
5 Hard Con...	0	0.00 %	✓	BEI Baseline Count	1792
6 High Floa...	1911	70.03 %	✗		
7 Negative ...	0	0.00 %	✓		
8 High Dura...	651	23.85 %	✗		
9(i) Invalid Fo...	0	0.00 %	✓		
9(ii) Invalid Ac...	0	0.00 %	✓		
10 Resources	841	30.82 %	✗		
11 Missed Ta...	78	4.35 %	✓		
12 Critical Path	1		✗		
13 CPLI		1.00	✓		
14 BEI		0.97	⚠		
				Constraint Type Counts	
				As Soon As Possible	2544
				As Late As Possible	0
				Start No Earlier Than	183
				Start No Later Than	0
				Finish No Earlier Than	2
				Finish No Later Than	0
				Must Start On	0
				Must Finish On	0
				Manually Scheduled Tasks	0
				Dangling Finishes	
				Out of Sequence Updates	
				Constraint Violations	
				Relationships on Summary Tasks	
				Summary Tasks with Resources	
				External Relationships	
				Baseline Not Set	
				Invalid Baseline Duration	
				Invalid Baseline Date Rollup	

IMS Critical Paths (without risk values applied)

Program Critical Path:

This is the sequence of tasks in the network (IMS) that create the longest total duration through the program (which includes all measurable effort).

Critical Path-Prime



□ MIGHT Delivery

ACartwright Humphreys/Jake Bolingensoc		CRITICAL PATH				2014												2015											
ID	Unique WBS ID	Task Name	Duration	Start	Finish	2014												2015											
3250	16642 5.03.07.00.03.0	MIGHTI Schedule Slack	30 days	Wed 11/18/15	Wed 1/6/16													11/28 @ 3/6 Labor(\$16,408.13)											
3249	16641 5.03.07.00.03.0	Deliver MIGHTI to PIP Integration	1 day	Tue 11/17/15	Tue 11/17/15													11/17 @ 13/17 Labor(\$32,086.26)											
3248	16640 5.03.07.00.03.0	Prepare for Preship Review	2 days	Fri 11/13/15	Mon 11/16/15													11/13 @ 11/16 Labor(\$84,376.51)											
3246	16638 5.03.07.00.03.0	Ship to Calibration Facility	3 days	Fri 10/16/15	Tue 10/20/15													10/16 @ 10/20 Labor(\$16,408.13)											
3244	16636 5.03.07.00.03.0	Assemble Into Shipping Container	1 day	Thu 10/15/15	Thu 10/15/15													10/15 @ 10/15 Labor(\$42,451.34)											
3243	16635 5.03.07.00.03.0	Alignment Verification	1 day	Wed 10/14/15	Wed 10/14/15													10/14 @ 10/14 Labor(\$70,752.23)											
3242	16634 5.03.07.00.03.0	Disassemble from TVAC GSE	2 days	Mon 10/12/15	Tue 10/13/15													10/12 @ 10/13 Labor(\$28,800.89)											
3240	16632 5.03.07.00.03.0	Perform Thermal Balance	4 days	Wed 9/23/15	Mon 9/28/15													9/23 @ 9/28 Labor(\$84,902.68)											
3238	16630 5.03.07.00.03.0	Assemble into TVAC GSE	2 days	Mon 9/21/15	Tue 9/22/15													9/21 @ 9/22 Labor(\$28,800.89)											
3239	16631 5.03.07.00.03.0	Certify Thermal Vacuum Chamber	4 days	Thu 9/17/15	Tue 9/22/15													9/17 @ 9/22 Labor(\$28,300.89)											
3237	16629 5.03.07.00.03.0	Attach Thermal Blankets	2 days	Thu 9/17/15	Fri 9/18/15													9/17 @ 9/18 Labor(\$42,451.34)											
3236	16628 5.03.07.00.03.0	Alignment Check	2 days	Tue 9/15/15	Wed 9/16/15													9/15 @ 9/16 Labor(\$28,028.21)											
3235	16627 5.03.07.00.03.0	Functional/Performance Testing MIGHTI FM	2 days	Fri 9/11/15	Mon 9/14/15													9/11 @ 9/14 Labor(\$46,713.69)											
3234	16626 5.03.07.00.03.0	Detach Accelerometers	1 day	Thu 9/10/15	Thu 9/10/15													9/10 @ 9/10 Labor(\$9,542.74)											
3233	16625 5.03.07.00.03.0	Perform Vibration Testing	6 days	Tue 9/1/15	Wed 9/9/15													9/1 @ 9/9 Labor(\$56,056.42)											
3232	16624 5.03.07.00.03.0	Attach Accelerometers	2 days	Fri 8/28/15	Mon 8/31/15													8/28 @ 8/31 Labor(\$9,342.74)											
3231	16623 5.03.07.00.03.0	Install Instrument on Shake Plate(s)	1 day	Thu 8/27/15	Thu 8/27/15													8/27 @ 8/27 Labor(\$18,085.47)											
3230	16622 5.03.07.00.03.0	Mass Properties	2 days	Tue 8/25/15	Wed 8/26/15													8/25 @ 8/26 Labor(\$18,085.47)											
3213	15702 5.03.00.1966	PER - MIGHTI Pre Environmental Review	1 day	Mon 8/24/15	Mon 8/24/15													8/24 @ 8/24											
2421	15810 5.03.01.04.01.2	MIGHTI PER Package	10 days	Mon 8/10/15	Fri 8/21/15													8/10 @ 8/21 Labor(\$56,056.42)											
3228	16620 5.03.07.00.03.0	Prepare for PER	5 days	Mon 8/3/15	Fri 8/7/15													8/3 @ 8/7 Labor(\$39,465.49)											
3227	16619 5.03.07.00.03.0	Functional/Performance Testing	2 days	Thu 7/30/15	Fri 7/31/15													7/30 @ 7/31 Labor(\$47,358.83)											
3226	16618 5.03.07.00.03.0	Alignment Verification	2 days	Tue 7/28/15	Wed 7/29/15													7/28 @ 7/29 Labor(\$38,465.49)											
3225	16617 5.03.07.00.03.0	Attach Calibration Lamp	1 day	Mon 7/27/15	Mon 7/27/15													7/27 @ 7/27 Labor(\$23,879.41)											
3224	16616 5.03.07.00.03.0	Fully Integrate FM Camera Electronics to A and B	2.5 days	Wed 7/22/15	Fri 7/24/15													7/22 @ 7/24 Labor(\$13,372.53)											
3074	16461 5.03.05.00.01.0	FM Delivery	5 days	Wed 7/15/15	Wed 7/22/15													7/15 @ 7/22 Labor(\$55,251.97)											
3073	16460 5.03.05.00.01.0	FM Pre-ship Review	5 days	Wed 7/8/15	Wed 7/15/15													7/8 @ 7/15 Labor(\$31,008.31)											
3072	16459 5.03.05.00.01.0	Characterization Report	2.5 days	Mon 7/6/15	Wed 7/8/15													7/6 @ 7/8 Labor(\$15,940.25)											
3071	16458 5.03.05.00.01.0	Data Analysis Preparation	5 days	Fri 6/26/15	Thu 7/2/15													6/26 @ 7/2 Labor(\$20,672.30)											
3070	16457 5.03.05.00.01.0	Characterization Data Collection	10 days	Fri 6/12/15	Thu 6/25/15													6/12 @ 6/25 Labor(\$15,304.15)											
3069	16456 5.03.05.00.01.0	TVAC Test	10 days	Fri 5/29/15	Thu 6/11/15													5/29 @ 6/11 Labor(\$40,827.77)											
3068	16455 5.03.05.00.01.0	Vibration Test	10 days	Thu 5/14/15	Thu 5/28/15													5/14 @ 5/28 Labor(\$40,827.77)											
3066	16453 5.03.05.00.01.0	Control and Camera Electronics Functional Test	10 days	Thu 4/30/15	Wed 5/13/15													4/30 @ 5/13											
3061	16448 5.03.05.00.01.0	Assemble Control Electronics Box	10 days	Thu 4/16/15	Wed 4/29/15													4/16 @ 4/29											
3052	16439 5.03.05.00.01.0	Install CCD and Functional Testing	2 wks	Thu 4/2/15	Wed 4/15/15													4/2 @ 4/15											
3051	16438 5.03.05.00.01.0	Pre-CCD Functional Testing	3 days	Mon 3/30/15	Wed 4/1/15													3/30 @ 4/1											
3047	16434 5.03.05.00.01.0	Control Electronics Functional Testing	5 wks	Mon 2/23/15	Fri 3/27/15													2/23 @ 3/27											
3045	16432 5.03.05.00.01.0	Digital Board	9 days	Mon 2/9/15	Fri 2/20/15													2/9 @ 2/20											
3046	16433 5.03.05.00.01.0	Analog Board	9 days	Mon 2/9/15	Fri 2/20/15													2/9 @ 2/20											
3037	16424 5.03.05.00.01.0	Digital Board	17 days	Wed 1/14/15	Fri 2/6/15													1/14 @ 2/6											
3038	16425 5.03.05.00.01.0	Analog Board	17 days	Wed 1/14/15	Fri 2/6/15													1/14 @ 2/6											
3035	16418 5.03.05.00.01.0	FM Delivery	5 days	Wed 12/23/14	Wed 1/7/15													12/23 @ 1/7											

Extreme Ultraviolet Spectrograph (EUV)

ID	Unlabeled	WBS	Task Name	Duration	Start	End	Path
4677	6520	5.05.00.07.17.9	EUV Delivery to P1 IM7	1 day	Wed 12/21/15	Wed 12/21/15	
4676	6520	5.05.00.07.17.9	EUV Schedule Slack	30 days	Mon 11/9/15	Tue 1/22/16	
4675	17568	5.05.00.07.17.11	PRR - EUV Pre-Ship Review	1 day	Fri 11/4/15	Fri 11/4/15	
4679	10885	5.05.00.07.17.11	Remove EUV Flight spectrometer from tank	2 days	Wed 11/4/15	Thu 11/5/15	
4674	10886	5.05.00.07.17.11	EUV ready for integration onto S/C Payload	0 days	Thu 11/5/15	Thu 11/5/15	
4672	10864	5.05.00.07.17.11	EUV Flight Spectrometer Wavelength Calibration	7 days	Mon 10/26/15	Tue 11/3/15	
4671	10863	5.05.00.07.17.11	EUV Flight Spectrometer Imaging Calibration	8 days	Wed 10/14/15	Fri 10/23/15	
4670	10862	5.05.00.07.17.11	EUV Flight Spectrometer Resolution Calibration	8 days	Fri 10/2/15	Tue 10/13/15	
4668	10860	5.05.00.07.17.11	Thermal-vac survival limits testing in T-V tank	5 days	Thu 9/10/15	Wed 9/16/15	
4667	10859	5.05.00.07.17.11	EUV FR spectrometer vibration test	5 days	Wed 9/2/15	Wed 9/9/15	
4666	17567	5.05.00.07.17.11	PRR - EUV Performance Review	1 day	Tue 9/1/15	Tue 9/1/15	
4665	10857	5.05.00.07.17.11	Remove from vac tank and add baffles, covers & Add SR + Vacuum Door + Entrance Baffle	3 days	Thu 8/27/15	Mon 8/31/15	
4660	10855	5.05.00.07.17.11	EUV Flight Component QE tests in vacuum	8 days	Tue 7/28/15	Thu 8/18/15	
4661	10853	5.05.00.07.17.11	Coarse alignment - remove kit	2 days	Fri 7/24/15	Mon 7/27/15	
4659	10851	5.05.00.07.17.11	Integrate FLT grating + baffles + flight detector + install EUV in vacuum tank	6 days	Thu 7/16/15	Thu 7/23/15	
4662	10852	5.05.00.07.17.11	Install EUV in vacuum tank	3 days	Tue 7/21/15	Thu 7/23/15	
4607	3526	5.05.00.06.05.01	EUV Detector FLT + Electronics Shack Vibration	5 days	Thu 7/9/15	Wed 7/15/15	
4608	3527	5.05.00.06.05.01	Detector FLT System Ready for Spectrometer I & Detector QE calibration in cath chamber	7 days	Thu 6/18/15	Fri 6/26/15	
4694	3523	5.05.00.06.05.01	Detector FLT Test & Calibration with FLT01	18 days	Fri 5/22/15	Wed 6/17/15	
4422	3474	5.05.00.05.02.01	Digitizer PCB Sinking & Coating	5 days	Fri 5/15/15	Thu 5/21/15	
4423	3475	5.05.00.05.02.01	Digitizer FLT Board Ready	0 days	Thu 5/21/15	Thu 5/21/15	
4421	3473	5.05.00.05.02.01	Digitizer Bench Test With FLT ACTELs	15 days	Fri 4/24/15	Thu 5/14/15	
4420	3472	5.05.00.05.02.01	Digitizer FLT PCB Assembly in frame	4 days	Mon 4/20/15	Thu 4/23/15	
4419	3471	5.05.00.05.02.01	Digitizer FLT Board Stuff	15 days	Mon 3/30/15	Fri 4/17/15	
4438	3470	5.05.00.05.02.01	Digitizer FLT Parts Kit	10 days	Mon 3/16/15	Fri 3/27/15	
4417	3469	5.05.00.05.02.01	Digitizer FLT Box Frame Fabrication	24 days	Mon 2/9/15	Fri 3/13/15	
4416	3467	5.05.00.05.02.01	Digitizer FLT PCB Fabrication	13 days	Mon 1/12/15	Fri 2/6/15	
4413	3465	5.05.00.05.02.01	Digitizer FLT Box Frame Design Modifications	40 days	Fri 11/7/14	Fri 1/9/15	
4412	3464	5.05.00.05.02.01	Digitizer FLT PCB Layout Modifications	5 days	Fri 10/31/14	Thu 11/6/14	

Critical Path - Prime



☐ Deliver IVM EGSE

CRITICAL PATH										
ID	Unique ID	WBS	Task Name	Duration	Start	Finish	Gantt Chart			2015
1827	18022	5.07.00.15.02.0	Proc & Ship IVM-B Del to P	3 days	Thu 1/21/15	Mon 1/20/15	[Gantt bar]			1/20 @ 1/20
1828	18530	1.7.7.11.14.2.10	IVM Schedule Margin	30 days	Thu 12/1/15	Wed 1/20/16	[Gantt bar]			12/1 @ 1/20
1829	18022	5.07.00.15.02.0	PSR - IVM-B Pre-Ship Review	1 day	Wed 12/2/15	Wed 12/2/15	[Gantt bar]			12/2 @ 12/2 Labor(180,544.92)
1830	18021	5.07.00.15.02.0	Finish Burn in Test & Update EOP and test	4 days	Tue 11/24/15	Tue 12/1/15	[Gantt bar]			11/24 @ 12/1 Labor(12,436.04)
1831	18020	5.07.00.15.02.0	IVM Physical Properties	1 day	Mon 11/23/15	Mon 11/23/15	[Gantt bar]			11/23 @ 11/23 Labor(56,312.16)
1832	18519	1.7.7.11.14.2.6	End Item Test	5 days	Mon 11/23/15	Fri 11/20/15	[Gantt bar]			11/23 @ 11/23
1833	18517	5.07.00.15.02.0	Random vibration	2 days	Wed 11/4/15	Thu 11/5/15	[Gantt bar]			11/4 @ 11/5 Labor(11,622.00)
1834	18514	5.07.00.15.02.0	End Item Test	10 days	Wed 10/28/15	Tue 11/10/15	[Gantt bar]			10/28 @ 11/10 Labor(52,093.92)
1835	18515	5.07.00.15.02.0	PSR - IVM-B Pre Environmental Review	1 day	Tue 11/3/15	Tue 11/3/15	[Gantt bar]			11/3 @ 11/3
1836	18513	5.07.00.15.02.0	Instrument Assembly	13 days	Fri 10/9/15	Tue 10/27/15	[Gantt bar]			10/9 @ 10/27 Labor(118,837.44)
1837	18508	5.07.00.15.01.0	Pre-integration Stack Check	5 days	Fri 10/2/15	Thu 10/8/15	[Gantt bar]			10/2 @ 10/8 Labor(6,186.16)
1838	18507	5.07.00.15.01.0	IVM-B Board 3 Post CC Test/Full/Final Test	5 days	Fri 9/25/15	Thu 10/1/15	[Gantt bar]			9/25 @ 10/1 Labor(16,417.84)
1839	18506	5.07.00.15.01.0	BD1 Stake/CC	3 days	Tue 9/22/15	Thu 9/24/15	[Gantt bar]			9/22 @ 9/24 Labor(18,351.67)
1840	18504	5.07.00.15.01.0	Board 3 Post CC Test/Full/Final Test	5 days	Tue 9/15/15	Mon 9/21/15	[Gantt bar]			9/15 @ 9/21 Labor(16,417.84)
1841	18503	5.07.00.15.01.0	BD2 Stake/CC	5 days	Tue 9/8/15	Mon 9/14/15	[Gantt bar]			9/8 @ 9/14 Labor(16,400.11)
1842	18502	5.07.00.15.01.0	Board 4 Post CC Test/Full/Final Test	6 days	Tue 9/8/15	Tue 9/15/15	[Gantt bar]			9/8 @ 9/15 Labor(12,086.44)
1843	18500	5.07.00.15.01.0	BD4 Stake/CC	5 days	Mon 8/31/15	Fri 9/4/15	[Gantt bar]			8/31 @ 9/4 Labor(6,900.11)
1844	18495	5.07.00.15.01.0	IVM-4 Power Supplies PWA PreCC Test and	4 days	Tue 8/25/15	Fri 8/28/15	[Gantt bar]			8/25 @ 8/28 Labor(12,086.44)
1845	18494	5.07.00.15.01.0	IVM-4 Power Supplies PWA Assembly in House	7 days	Fri 8/14/15	Mon 8/24/15	[Gantt bar]			8/14 @ 8/24 Labor(12,025.76)
1846	18485	5.07.00.15.01.0	IVM-1 BPA/DM Electrometer Assembly	7 days	Wed 8/5/15	Thu 8/13/15	[Gantt bar]			8/5 @ 8/13 Labor(17,694.81)
1847	18481	5.07.00.15.01.0	IVM-2 BV Generator PWA Assembly in House	7 days	Mon 7/27/15	Tue 8/4/15	[Gantt bar]			7/27 @ 8/4 Labor(12,855.76)
1848	18488	5.07.00.15.01.0	IVM-3/Digital Controller PWA Assembly in house	7 days	Thu 7/16/15	Fri 7/24/15	[Gantt bar]			7/16 @ 7/24 Labor(12,132.81)
1849	18446	5.07.00.13.02.4	Test	10 days	Thu 4/23/15	Wed 5/6/15	[Gantt bar]			4/23 @ 5/6
1850	18447	5.07.00.13.02.4	Std 4 Software	20 days	Thu 4/9/15	Wed 5/6/15	[Gantt bar]			4/9 @ 5/6
1851	18445	5.07.00.13.02.4	Fab Cables	15 days	Thu 4/2/15	Wed 4/22/15	[Gantt bar]			4/2 @ 4/22
1852	18444	5.07.00.13.02.4	Assemble Test Set	15 days	Thu 3/12/15	Wed 4/1/15	[Gantt bar]			3/12 @ 4/1
1853	18443	5.07.00.13.02.4	Procure Parts	20 days	Wed 2/1/15	Wed 3/11/15	[Gantt bar]			2/1 @ 3/11
1854	18432	5.07.00.13.02.4	Assemble Test Set	15 days	Thu 2/19/15	Wed 3/11/15	[Gantt bar]			2/19 @ 3/11
1855	18431	5.07.00.13.02.4	Procure Parts	20 days	Wed 1/21/15	Wed 2/18/15	[Gantt bar]			1/21 @ 2/18
1856	18426	5.07.00.13.02.4	Assemble Test Set	15 days	Wed 1/20/15	Wed 2/18/15	[Gantt bar]			1/20 @ 2/18
1857	18425	5.07.00.13.02.4	Procure Parts	20 days	Fri 12/26/14	Tue 1/22/15	[Gantt bar]			12/26 @ 1/22
1858	18418	5.07.00.13.02.4	Assemble Test Set	15 days	Tue 1/6/15	Tue 1/22/15	[Gantt bar]			1/6 @ 1/22
1859	18437	5.07.00.13.02.4	Procure Parts	20 days	Wed 12/3/14	Mon 1/5/15	[Gantt bar]			12/3 @ 1/5
1860	18373	5.07.00.13.01	Final Board Test	5 days	Wed 5/27/15	Tue 6/2/15	[Gantt bar]			5/27 @ 6/2
1861	18372	5.07.00.13.01	Final Board Clearing	3 days	Thu 5/21/15	Tue 5/26/15	[Gantt bar]			5/21 @ 5/26
1862	18371	5.07.00.13.01	Stake and Conformal Coat IVM Boards	5 days	Thu 5/14/15	Wed 5/20/15	[Gantt bar]			5/14 @ 5/20
1863	18370	5.07.00.13.01	Pre-Conformal Coat Test	5 days	Thu 5/7/15	Wed 5/13/15	[Gantt bar]			5/7 @ 5/13
1864	18249	5.07.00.07.04.4	EGSE Drawings	8 days	Wed 11/19/14	Tue 12/2/14	[Gantt bar]			11/19 @ 12/2 Labor(11,024.00)
1865	18248	5.07.00.07.04.4	Power Supply (IVM-4) Board	8 days	Fri 11/7/14	Tue 11/18/14	[Gantt bar]			11/7 @ 11/18 Labor(11,024.00)
1866	18247	5.07.00.07.04.4	BV Generator (IVM-2) Board	8 days	Tue 10/28/14	Thu 11/6/14	[Gantt bar]			10/28 @ 11/6 Labor(12,768.72)
30	180	1.8E.888	IVM Schedule Slack	30 days	Thu 12/3/15	Wed 1/20/16	[Gantt bar]			12/3 @ 1/20

Critical Path - Prime

- Critical Path-Prime
- FUV FM1 Delivery

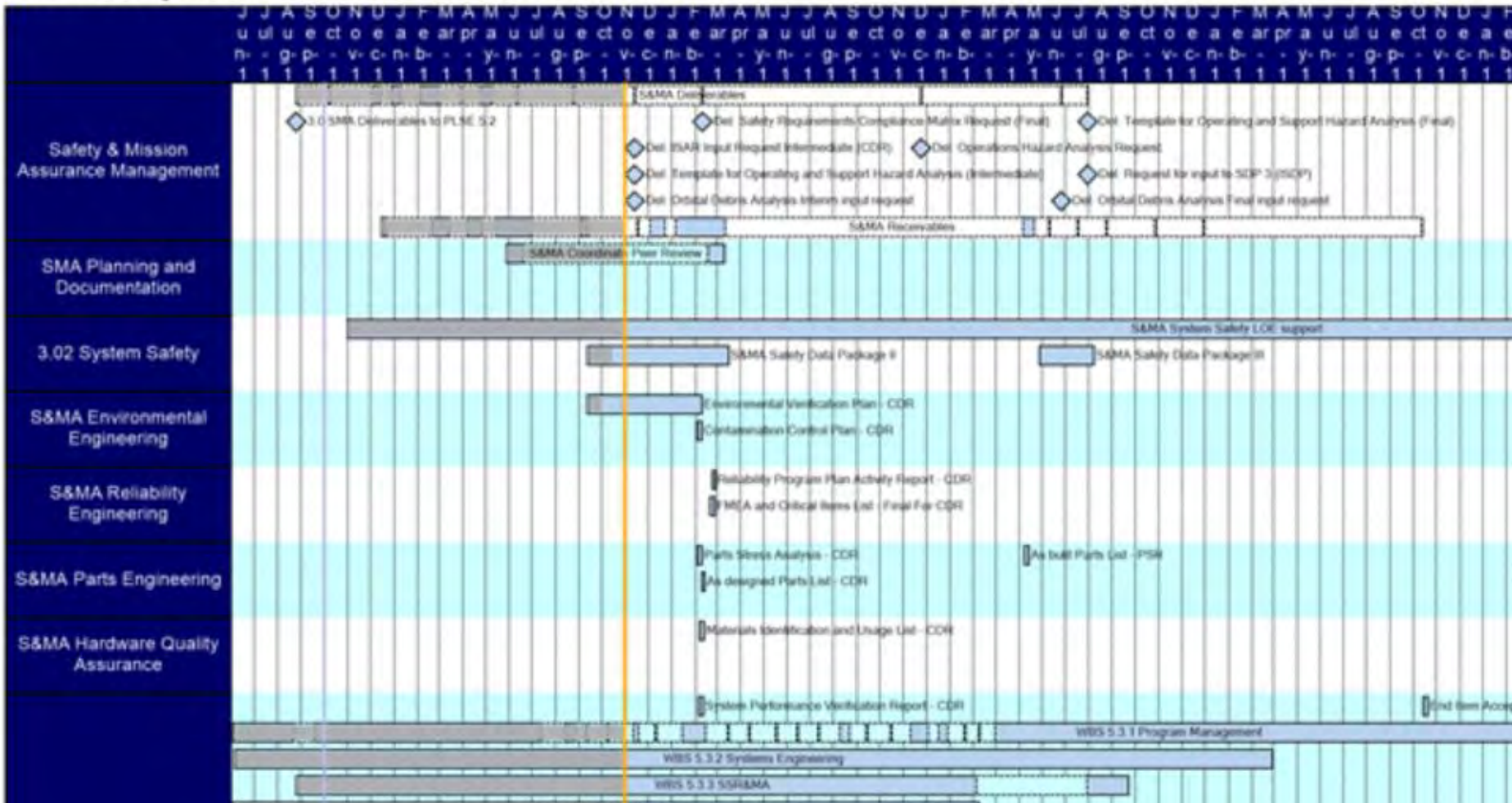
A: Cambridge Humphreys/John Hollingsworth			CRITICAL PATH												
ID	Unit	Task Name	Duration	Start	Finish	Start	Start	Start	Start	Start	Start	Start	Start	Start	Start
3872	15419	Follow FM1 to UICB	2 days	Fri 6/29/15	Mon 6/29/15										
3811	15304	Flight Model Pre-Ship Review	0 days	Thu 6/25/15	Thu 6/25/15										
4001	15499	Assemble EICP	2 days	Wed 6/24/15	Thu 6/25/15										
3890	15487	Performance Baseline (Antiband)	1 day	Tue 6/23/15	Thu 6/25/15										
3898	15486	TMAC Cycle Testing	6 days	Mon 6/15/15	Mon 6/22/15										
3897	15485	TMAC Test Setup	5 days	Mon 6/8/15	Fri 6/12/15										
3896	15486	TMAC Cycle Testing	6 days	Fri 6/26/15	Fri 6/26/15										
3897	15485	TMAC Test Setup	5 days	Thu 5/21/15	Thu 5/28/15										
3896	15486	Performance Baseline (Antiband)	1 day	Wed 5/20/15	Wed 5/20/15										
3894	15482	Performance Baseline (Antiband)	1 day	Tue 5/19/15	Tue 5/19/15										
3893	15481	Vibration Test	2 days	Fri 5/15/15	Mon 5/18/15										
3892	15480	Vibration Setup	1 day	Thu 5/14/15	Thu 5/14/15										
3891	15480	Performance Baseline (Antiband)	1 day	Wed 5/13/15	Wed 5/13/15										
3890	15486	Reassemble	1 day	Tue 5/12/15	Tue 5/12/15										
3887	15485	Band Converter	4 days	Wed 5/6/15	Mon 5/11/15										
3896	15484	Characterization in Thermal Chamber IS	2 days	Mon 5/4/15	Tue 5/5/15										
3893	15483	Assemble Baseline Converter	3 days	Wed 4/29/15	Fri 5/1/15										
3894	15483	Functional Test	1 day	Tue 4/28/15	Thu 4/28/15										
3893	15483	Mechanical Assembly no Converter	2 days	Fri 4/24/15	Mon 4/27/15										
3892	15480	Conformal Coat Main Boards w/ Pre-Bake	5 days	Fri 4/17/15	Thu 4/23/15										
3891	15488	Electrical Functional Test w/ CCD IR Taper	2 days	Wed 4/15/15	Thu 4/16/15										
3890	15488	Bond Taper	4 days	Thu 4/9/15	Thu 4/14/15										
3848	15447	Install CCD on Daughter Board	1 day	Wed 4/8/15	Wed 4/8/15										
3848	15446	Conformal Coat Daughter Board	5 days	Wed 4/1/15	Tue 4/7/15										
3848	15444	PCB Backlog in SMT Lab	7 days	Mon 3/23/15	Tue 3/31/15										
3848	15443	UV Converter Functional Checkoff	1 day	Fri 3/20/15	Fri 3/20/15										
3842	15483	Review Flight UV Converters (2) from LCB	1 day	Thu 3/19/15	Wed 3/18/15										
3790	15446	Distilled water testing FUV UV Converter	10 days	Thu 3/18/15	Wed 3/18/15										
3791	15447	FM models ready for integration	0 days	Wed 3/18/15	Wed 3/18/15										
3790	15445	Functional test	3 days	Fri 3/13/15	Wed 3/18/15										
3790	15444	Tube unload	3 days	Tue 3/10/15	Thu 3/12/15										
3791	15443	Functional test	2 days	Fri 3/6/15	Mon 2/9/15										
3790	15443	Window Seal	3 days	Tue 2/9/15	Thu 2/11/15										
3790	15441	Shoot Cr on window, measure transmission	3 days	Thu 2/19/15	Mon 2/22/15										
3794	15440	Scrub, Functional test	8 days	Fri 1/16/15	Wed 2/18/15										
3793	15439	Vac bake, Functional test	3 days	Tue 1/13/15	Thu 1/15/15										
3792	15438	Functional test	3 days	Thu 1/8/15	Mon 1/12/15										
3791	15437	Process load, sub-watts, windman, Cr load into holder	1 day	Fri 1/2/15	Fri 1/2/15										
3790	15430	Final tube assembly & functional/demountable	6 days	Fri 12/19/14	Thu 12/30/14										
3790	15430	Cu Deposition	2 days	Mon 12/29/14	Tue 12/29/14										
3747	15429	Oil test MCP in XEL system FUV	4 days	Mon 12/15/14	Thu 12/18/14										
3747	15428	Deposit photocathode	3 days	Wed 12/10/14	Fri 12/12/14										
3741	15427	Functional tests	4 days	Thu 12/4/14	Tue 12/9/14										
3739	15425	Startup Internals: MCP phosphor, Wed phosphor screen, leak check	4 days	Wed 11/26/14	Wed 12/3/14										
3738	15424	Wed phosphor screen, leak check	3 days	Fri 11/21/14	Tue 11/25/14										
3736	15422	Chemical leak check, Ni pot	3 days	Tue 11/18/14	Thu 11/20/14										
3737	15423	Startup Internals: MCP phosphor, Vacuum bake	0 days	Thu 11/20/14	Thu 11/20/14										
3732	15421	MCP phosphor, Vacuum bake	5 days	Tue 11/11/14	Mon 11/17/14										
3730	15420	Indium PB / alum	4 days	Wed 11/5/14	Mon 11/9/14										
3731	15419	Wed phosphor adaptor, leak check	5 days	Wed 10/29/14	Tue 11/4/14										

Summary Schedules

Summary Schedules

□ Safety and Mission Assurance

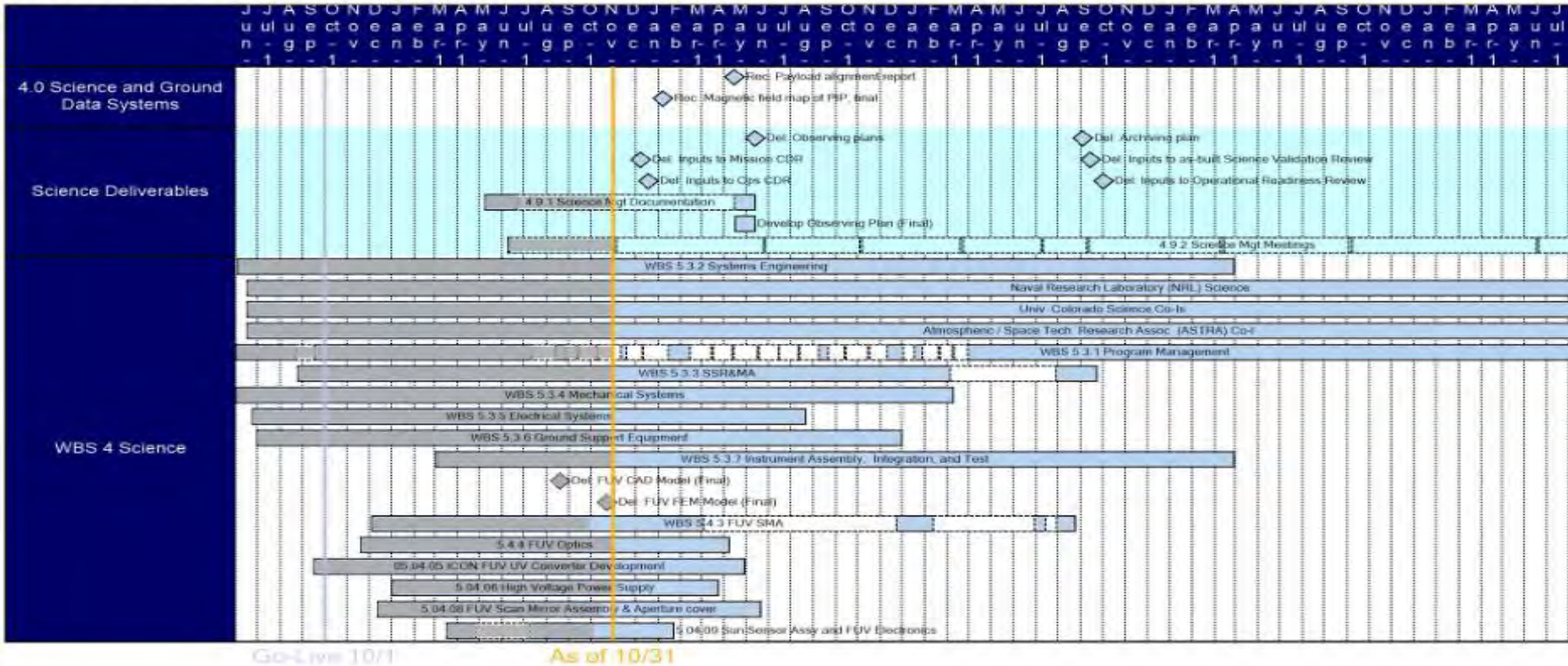
3.0 Safety and Mission Assurance



Summary Schedules

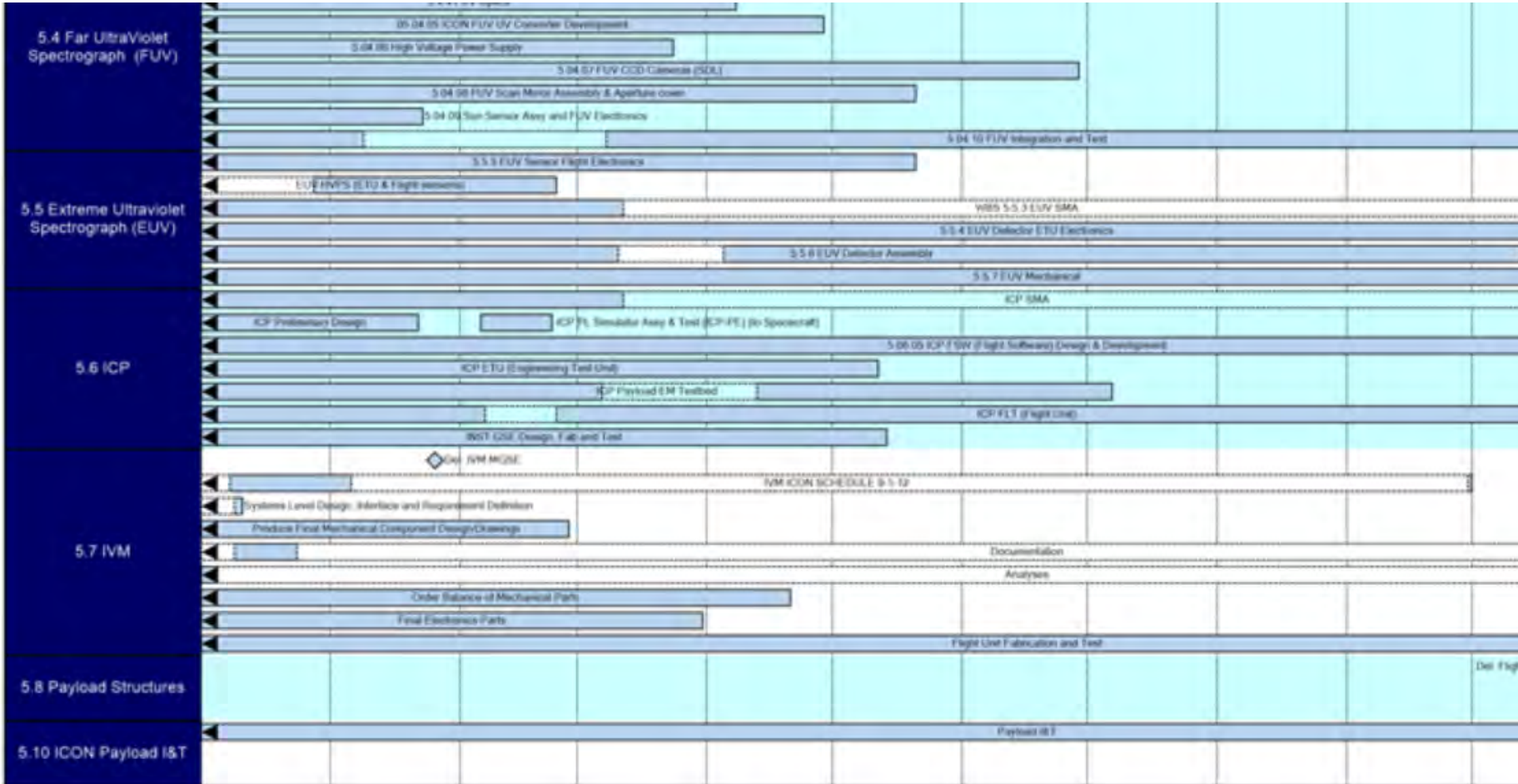
Science Receivables

4.0 Science Receivables



Summary Schedules

□ Payload Summary Schedule

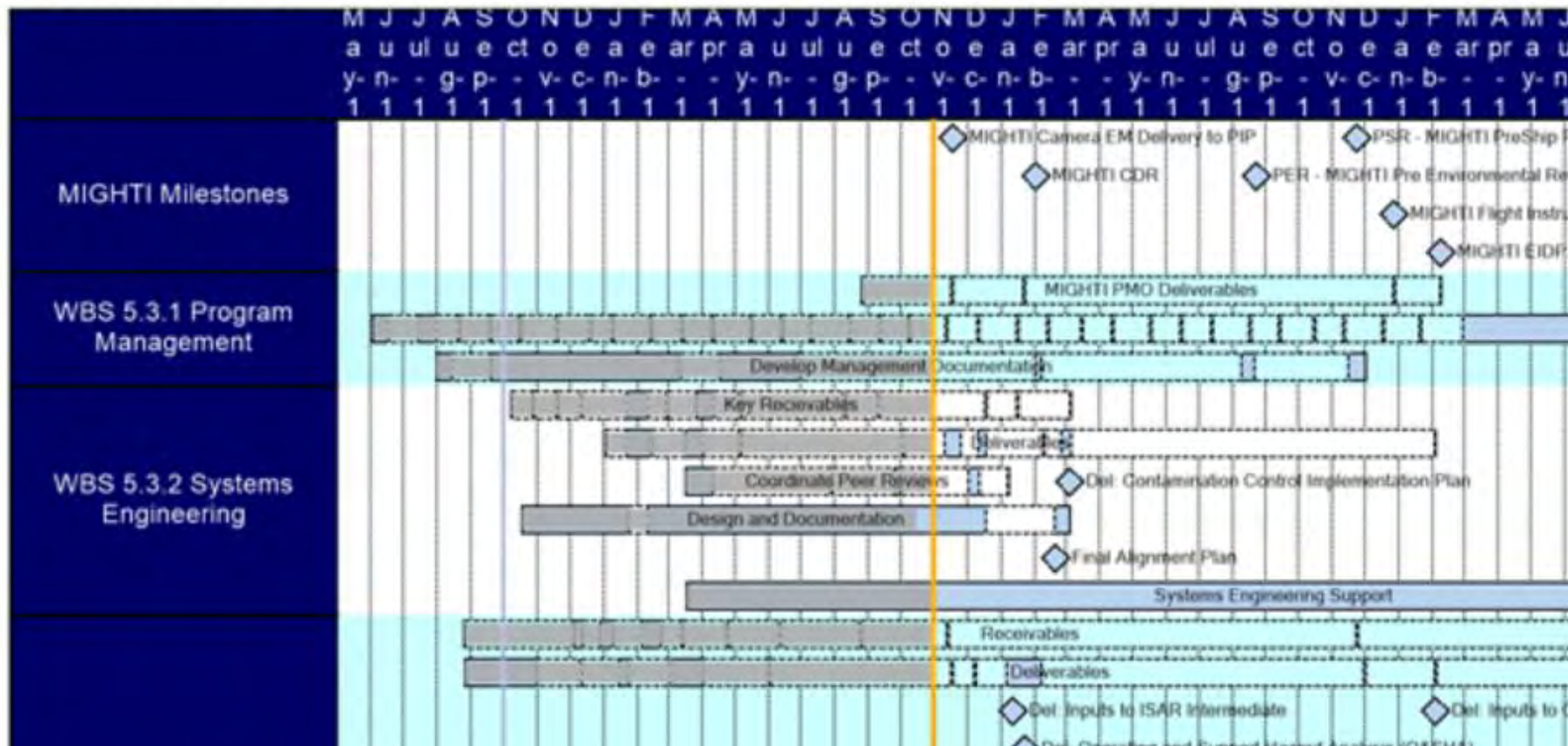


Summary Schedules

5.3 MIGHTI

Preview

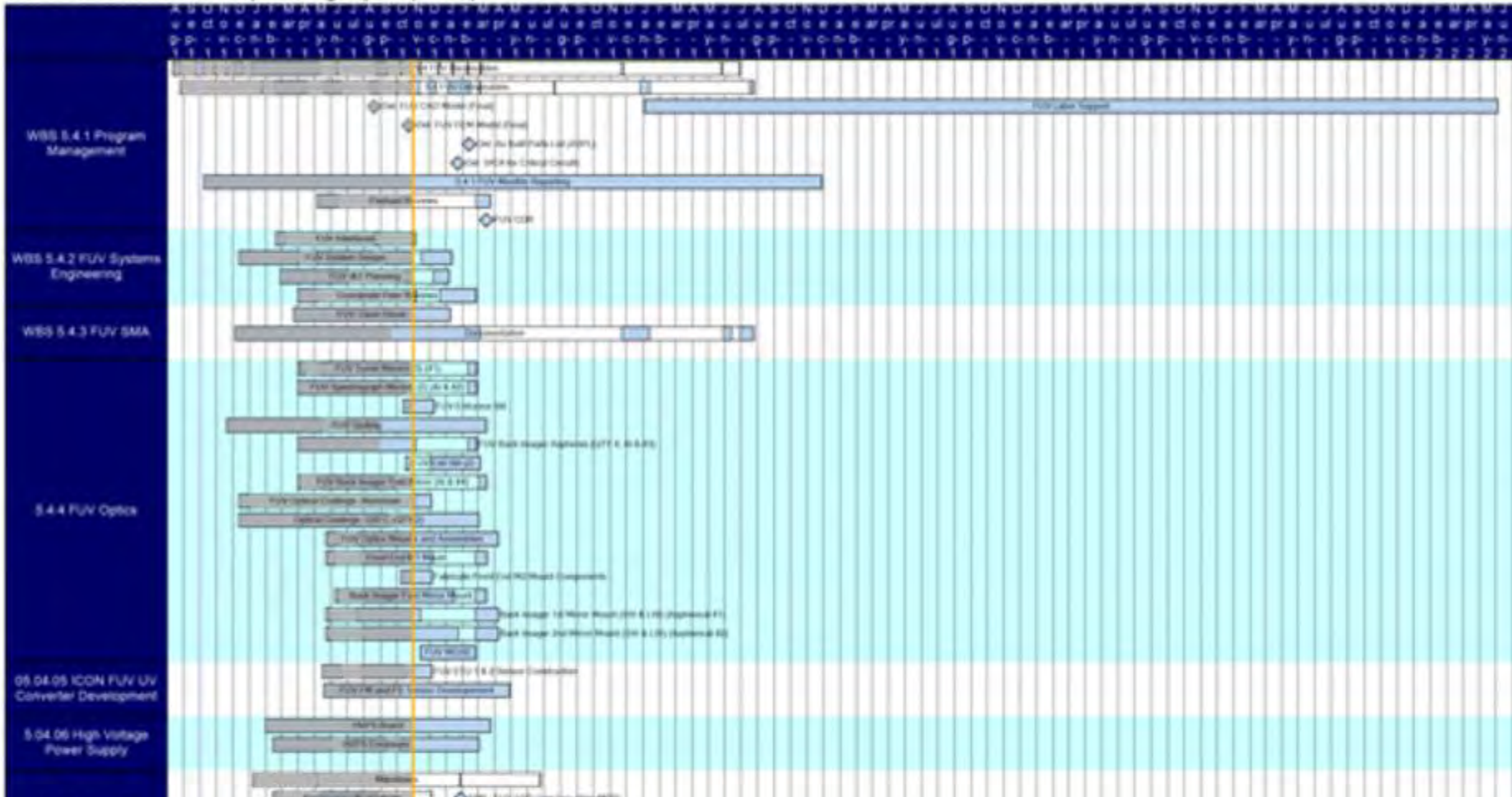
5.3 MIGHTI



Summary Schedules

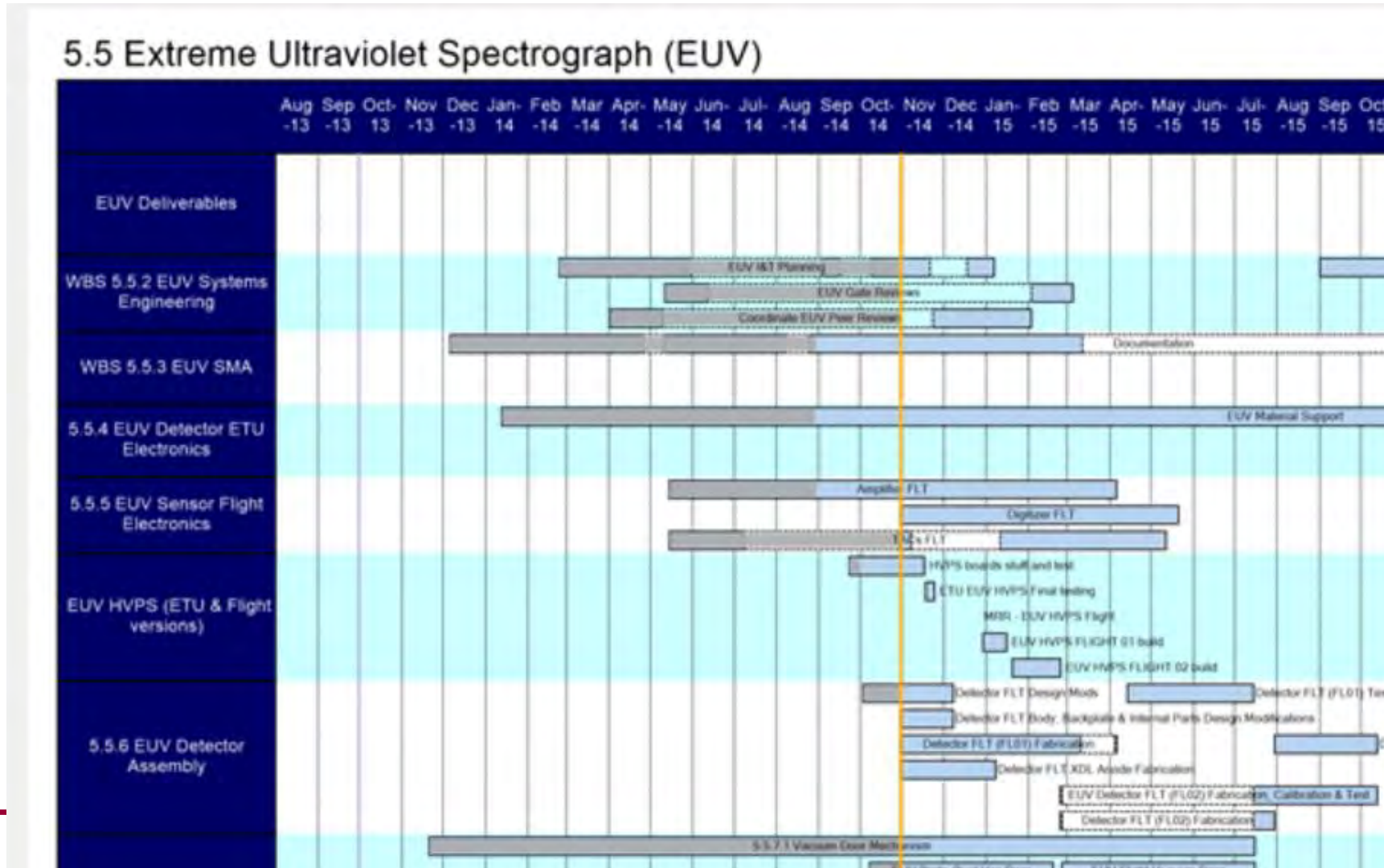
5.4 Far UltraViolet Spectrograph (FUV)

5.4 Far UltraViolet Spectrograph (FUV)



Summary Schedules

5.5 Extreme Ultraviolet Spectrograph (EUV)

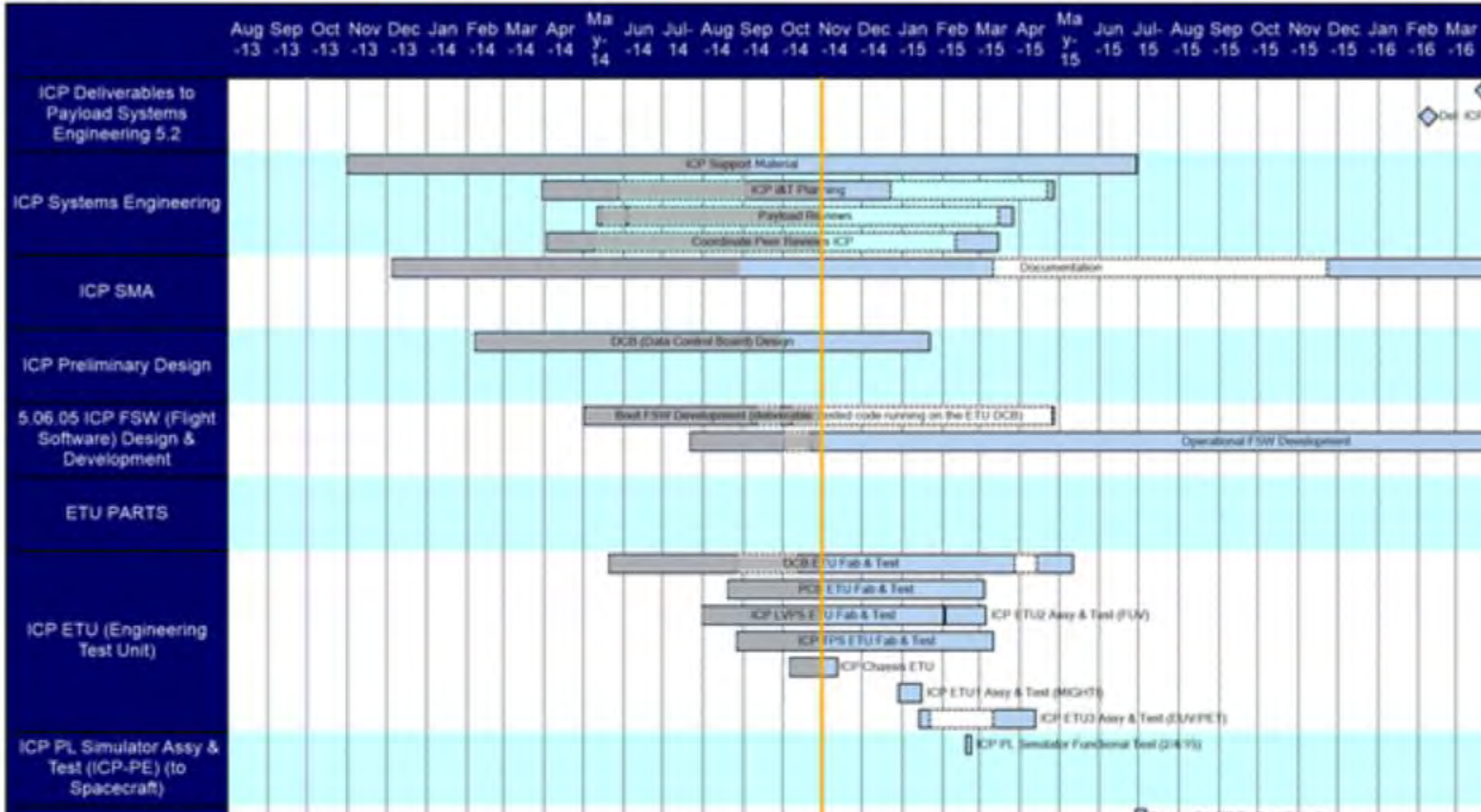


Summary Schedules



5.6 ICP

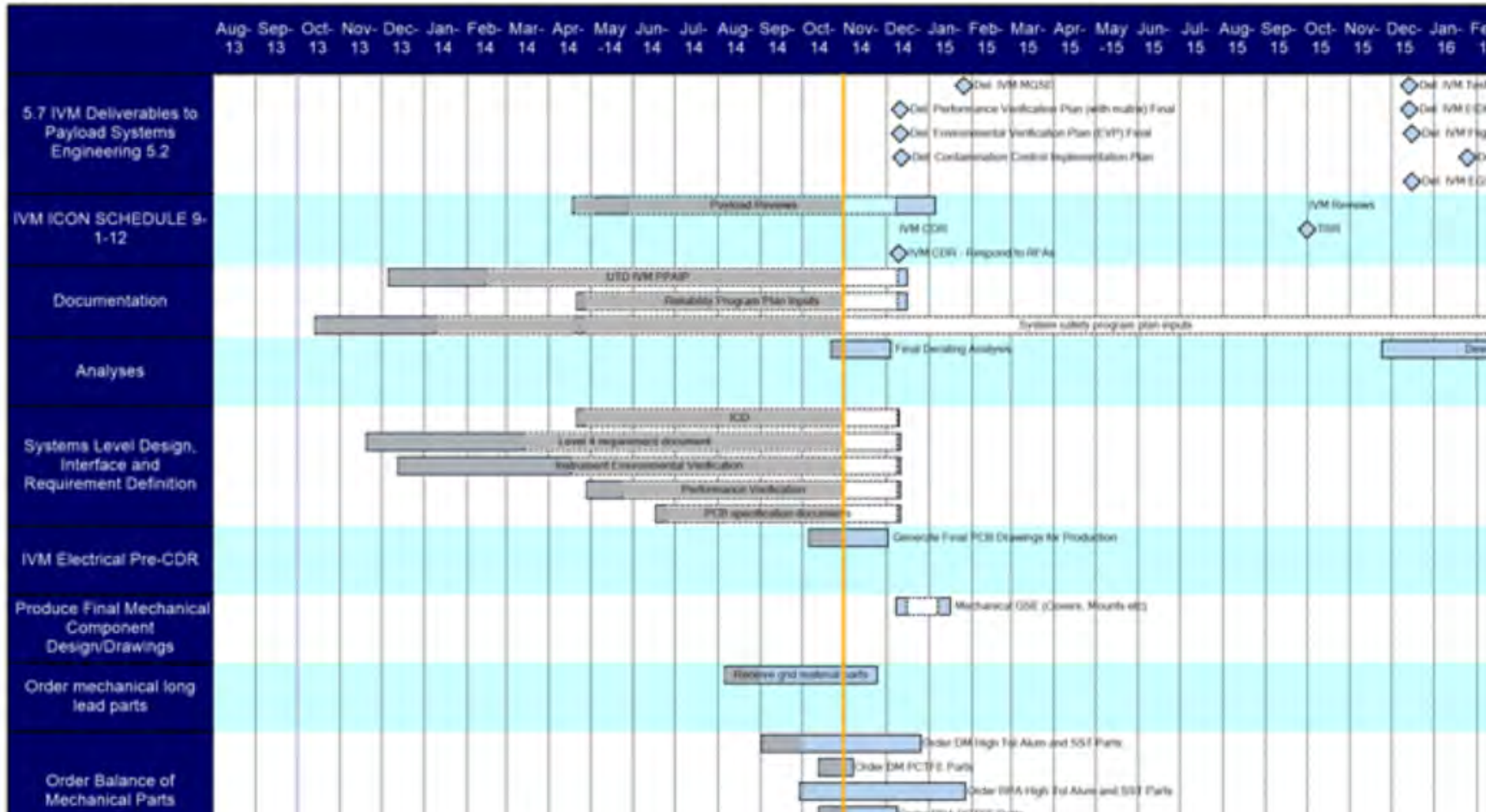
5.6 ICP



Summary Schedules

5.7 IVM

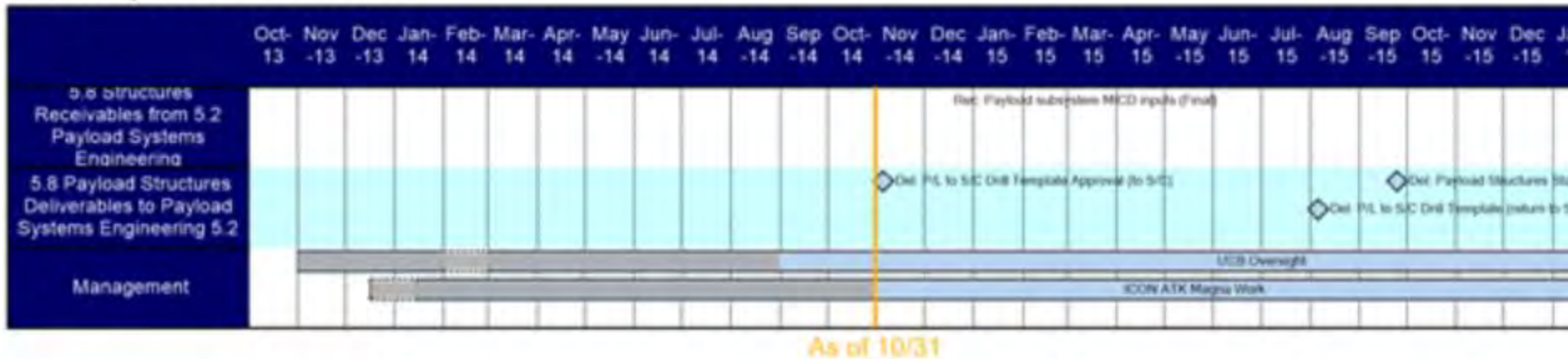
5.7 IVM



Summary Schedule

5.8 Payload Structures

5.8 Payload Structures



5.10 ICON Payload I&T

5.10 ICON Payload I&T

